



DISEASE SHIELD™ COPPER SOAP

FLOWABLE LIQUID COPPER FUNGICIDE

CONTROLS LISTED PLANT DISEASES USING LOW CONCENTRATIONS OF COPPER

FOR ROSES, LISTED FRUITS & LISTED VEGETABLES



Keep Out Of Reach Of Children
CAUTION (See back booklet for additional precautionary statements and directions for use)
Net Contents 128 FL. OZ. (3.785 L.)

ACTIVE INGREDIENT:
Copper Octanoate (Copper Soap)
CAS Reg. No. 20543-04-8..... 10.00%
OTHER INGREDIENTS:..... 90.00%
TOTAL:..... 100.00%
Metallic copper equivalent 1.8%
EPA Est. No. 4-NY-1 EPA Reg. No. 67702-2-93133
Intended For Residential Use Only

XXXXXXXXXX

98994

DISEASE SHIELD™ COPPER SOAP FUNGICIDE

WHERE TO USE: LISTED VEGETABLES,
FRUITS, NUTS, HERBS AND ORNAMENTALS

CAN BE USED UP TO THE DAY OF HARVEST

CONTROLS POWDERY MILDEW, DOWNY
MILDEW, BLACK SPOT AND RUST

Manufactured under a license of W. Neudorff
GmbH KG, Germany.

EPA Est. No. 4-NY-1

EPA Reg. No. 67702-2-93133

Distributed by: A.M. Leonard

241 Fox Drive, Piqua, OH 45356

Quart



NEUDORFF

AM



8 50001 45009 6

DIRECTIONS FOR USE

It is a violation of Federal Law to use this product in a manner inconsistent with its labeling.

Read and follow all applicable directions and precautions on this label before using.

Do not allow adults, children or pets to enter the treated area until sprays have dried. Do not apply this product in a way that will contact adults, children or pets, either directly or through drift.

APPLICATION DIRECTIONS

Shake well before use. The hose-end sprayer automatically dilutes the product to control listed diseases at a rate of 1.1 to 2.3 gallons of diluted spray per 1,000 ft².

For best control, start spraying before the disease is visible or when disease is first visible on the plant. Spray all plant parts thoroughly (top and bottom of leaves), and unless otherwise directed in the crop table, repeat every 7 to 10 days. See application notes for the specific crop application interval. If possible, time applications so that at least 12 hours of dry weather follows application. Reapply after rain, following crop specific application interval.

Hydroponic use: Apply as soon as disease appears, or as a preventive spray 2 weeks before disease normally appears. Apply as a foliar spray only. Do not apply directly to the water in hydroponic gardening systems. Discarded water from hydroponic growing systems may be used in greenhouses and to water indoor and outdoor container plants and garden areas. Water from these systems is prohibited from being discarded directly into a water source.

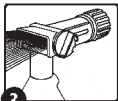
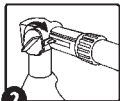
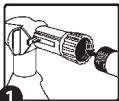
When **powdery mildew** presence is expected on a plant, spray the plants at the minimum application interval during the first 2 weeks after emergence.

To control **downy mildews, leaf and fruit spots, blights, and rust**, begin treatment 2 weeks before disease normally appears or when weather forecasts predict a long period of wet weather. Alternatively, begin treatment when disease first appears, and repeat as long as needed.

To prevent **fruit rots**, apply at the start of flowering and unless otherwise directed in the crop table, repeat every 7 to 10 days until harvest. Fungicidal sprays are especially warranted when weather forecasts predict a long period of wet weather.

HOSE-END SPRAYER DIRECTIONS

1. Shake container well before using.
2. Connect a garden hose to the Ready Spray nozzle. Make sure the dial on the nozzle is in the "OFF" position with the safety tab in the valve notch.
3. Turn on the water at faucet. Extend hose to the farthest area to be treated and work back toward the faucet so you don't come in contact with the treated area.
4. To BEGIN spraying, point nozzle toward treatment site and
 - a. Bend the safety tab back (located at the right of the yellow dial) with your thumb,
 - b. Using your other hand, QUICKLY turn the dial clockwise until it stops.
Water will automatically mix with the product.
5. Spray plants thoroughly. Walk at a steady pace while spraying using an even sweeping motion, slightly overlapping treated areas.
6. To STOP spraying, QUICKLY turn the dial in the opposite direction of "ON" until it stops and the safety tab engages the notch on the valve. Turn water off at faucet. To relieve pressure before removing nozzle from hose, bend the safety tab back and turn dial "ON" until water stops spraying.



ORNAMENTALS: DISEASES CONTROLLED, LISTED BY PLANT

Ornamental Plant	Common Name	Diseases Controlled
<i>Aechmea fasciata</i>	Urn plant, bromeliad	Anthracnose leaf and fruit spot, Bacterial leaf spot and blight
<i>Aeschynanthus pulcher</i>	Lipstick vine	Botrytis blight, Leaf spot (fungal)
<i>Aglaonema</i> species	Chinese evergreen	Anthracnose leaf and fruit spot, Bacterial leaf spot and blight, Leaf spot (fungal), Rhizoctonia blight, Soft rot
<i>Anthurium</i> species	Tailflower	Anthracnose leaf and fruit spot, Bacterial leaf spot and blight, Leaf spot (fungal), Rhizoctonia blight, Soft rot
<i>Aphelandra squarrosa</i>	Zebra plant	Botrytis blight, Leaf spot (fungal), Rhizoctonia blight
<i>Araucaria heterophylla</i>	Norfolk Island pine	Colletotrichum needle blight
<i>Arecastrum romazoffianum</i>	Queen palm	Exosporium leaf spot, Phytophthora bud rot

Ornamental Plant	Common Name	Disease Controlled
<i>Asplenium nidus</i>	Bird's nest fern	Bacterial leaf spot and blight
<i>Brassaia actinophylla</i>	Schefflera	Anthracnose leaf and fruit spot, Bacterial leaf spot and blight, Leaf spot (fungal) Rhizoctonia blight
<i>Caladium</i> species	Caladium	Bacterial leaf spot and blight, Rhizoctonia blight
<i>Calathea</i> species	Rattlesnake plant	Bacterial leaf spot and blight, Leaf spot (fungal)
<i>Caryota mitis</i>	Fishtail palm	Bacterial leaf spot and blight, Leaf spot (fungal)
<i>Chamaedorea</i> species	various palms	Leaf spot
<i>Chrysalidocarpus lutescens</i>	Areca palm	Leaf spot
<i>Cissus</i> species	Grape ivy	Anthracnose leaf and fruit spot, Botrytis blight, Downy mildew, Powdery mildew, Rhizoctonia blight
<i>Codiaeum variegatum</i>	Croton	Anthracnose leaf and fruit spot, Bacterial leaf spot and blight

Ornamental Plant	Common Name	Diseases Controlled
<i>Cordyline terminalis</i>	Ti plant	Anthracnose leaf and fruit spot, Leaf spot (fungal)
<i>Chrysoanthus</i> species	Bromeliad, earthstar	Anthracnose leaf and fruit spot
<i>Dieffenbachia</i> species	Dieffenbachia	Bacterial leaf spot and blight, Leaf spot (fungal) Rhizoctonia blight
<i>Dracaena</i> species	Dracaena, Corn plant	Bacterial leaf spot and blight, Botrytis blight, Leaf spot (fungal)
<i>Epipremnum aureum</i>	Pothos, Devil's ivy	Bacterial leaf spot and blight, Rhizoctonia blight
<i>Euphorbia milii</i>	Euphorbia	Rhizoctonia blight
<i>Fatsia japonica</i>	Japanese fatsia	Bacterial leaf spot and blight, Leaf spot (fungal) Rhizoctonia blight
<i>Ficus benjamina</i>	Weeping fig	Leaf spot (fungal)
<i>Ficus elastica</i>	India-rubber tree	Leaf spot (fungal), Botrytis blight
<i>Fittonia verschaffeltii</i>	Nerve plant	Rhizoctonia blight
<i>Hedra helix</i>	English ivy	Anthracnose leaf and fruit spot, Bacterial leaf spot and blight, Botrytis blight, Leaf spot (fungal), Rhizoctonia blight

Ornamental Plant	Common Name	Diseases Controlled
<i>Hoya carmosa</i>	Wax plant	Botrytis blight, Leaf spot (fungal), Rhizoctonia blight
<i>Maranta leuconeura</i>	Prayer plant	Leaf spot (fungal)
<i>Monstera deliciosa</i>	Swiss cheese plant	Bacterial leaf spot and blight, Anthracnose leaf and fruit spot, Rhizoctonia blight, Soft rot
<i>Nephrolepis exaltata</i>	Boston fern	Bacterial leaf spot and blight, Botrytis blight, Rhizoctonia blight
<i>Peperomia</i> species	Peperomia	Leaf spot (fungal), Rhizoctonia blight
<i>Philodendron</i> species	Philodendron	Anthracnose leaf and fruit spot, Botrytis blight, Leaf spot (fungal)
<i>Pilea</i> species	Aluminum plant	Bacterial leaf spot and blight, Anthracnose leaf and fruit spot, Leaf spot (fungal), Rhizoctonia blight
<i>Platycerium bifurcatum</i>	Staghorn fern	Bacterial leaf spot and blight, Rhizoctonia blight
<i>Polyscias</i> species	Aralia	Anthracnose leaf and fruit spot, Bacterial leaf spot and blight, Leaf spot (fungal)

Ornamental Plant	Common Name	Diseases Controlled
<i>Rhapis</i> species	Ladyfinger palm	Leaf spot (fungal)
<i>Rhoeo spathacea</i>	Oyster plant	Leaf spot (fungal)
<i>Saintpaulia ionantha</i>	African violet	Bacterial leaf spot and blight, Botrytis blight, Leaf spot (fungal), Powdery mildew
<i>Sansevieria triafasciata</i>	Snake plant	Bacterial leaf spot and blight, Leaf spot (fungal)
<i>Schefflera arboricola</i>	Dwarf Schefflera	Bacterial leaf spot and blight, Leaf spot (fungal)
<i>Schlumbergera</i> species	Cactus	Leaf spot (fungal)
<i>Sedum</i> species	Sedum	Leaf spot (fungal)
<i>Spathiphyllum</i> species	Spathe flower	Leaf spot (fungal), Rhizoctonia blight
<i>Syngonium podophyllum</i>	Nepthytis	Bacterial leaf spot and blight, Leaf spot (fungal), Rhizoctonia blight
<i>Yucca</i> species	yucca	Leaf spot (fungal)

Ornamentals

Do not use more 373 fl. oz. of product/1000 sq. ft. per year on ornamentals. This product may cause some copper toxicity on some plant species. Before spraying a specific plant species consult your State Experiment Station or make a test spray.

Crop	Diseases Controlled	Application Notes
Pine	Needle blight	Spray until needles are thoroughly wet with spray. Apply when new needles are just emerging.
Rose and Ornamental Shrubs (Such as; Crape Myrtle, Forsythia, Hydrangea, Willow, Mock-Orange, Deutzia, Pyracantha, Japanese quince, Abelia, Summersweet)	Blackspot, Downy mildew, Gray mold (Botrytis), Leafspots, Powdery mildew, Rust	May cause copper toxicity on some rose varieties. Copper toxicity appears as purple spots. For Black spot, mix 1.44 fl. ozs. of this product per gallon of water. For Powdery Mildew, mix 1.08 fl. ozs. of this product per gallon of water. In damp cool conditions (below 60°F), phytotoxicity is likely to occur. The hose end sprayer applies product within the rates above.
Sycamore	Anthracnose leaf spot	Make first application just before buds begin to swell, and repeat twice, at 7-day intervals.

FRUITS AND VEGETABLES

Crop	Diseases Controlled	Maximum Annual Rate (fl.oz. product/1000 sq. ft.)	Application Notes
Bean, Pea	Anthracnose leaf and fruit spot, Ascochyta leaf and pod spot, Bacterial blights (halo, common and brown spot), Downy mildew, Gray mold (Botrytis), Powdery mildew, White mold (Sclerotinia)	For beans: 88 fl. oz. For peas: 73 fl. oz.	Repeat application every 7-10 days if needed.
Beet, Sugar beet, Chard, Spinach	Cercospora leaf spot, Downy mildew, White rust, Powdery Mildew, Anthracnose blue mold	For beets: 146 fl. oz. For spinach and chard: 73 fl. oz.	Repeat application every 7-10 days if needed.
Carrots	Alternaria leaf blight, Bacterial leaf blight, Cercospora leaf blight	93 fl. oz.	Repeat application every 7-10 days if needed.
Celery and Celeriac	Bacterial leaf spot, Cercospora (early) blight, Septoria (late) blight	98 fl. oz.	Repeat application every 7-10 days if needed.

Crop	Diseases Controlled	Maximum Annual Rate (fl. oz. product/1000 sq. ft.)	Application Notes
Citrus (Grapefruit, Lemon, Lime, Kumquat, Orange, Pummelo, Tangerine)	Melanose spot, greasy spot, citrus scab, Alternaria brown spot, citrus canker, <i>Phytophthora</i> brown rot, and <i>Septoria</i>	235 fl. oz.	Repeat application every 14 days if needed. May cause phytotoxicity if conditions are conducive, when mixed with other products, or when applied to citrus seedlings grown in greenhouses or shadehouses.
Corn	Alternaria blight, Anthracnose, Ascochyta leaf and pod spot, Bacterial blights (halo, common and brown spot), Bacterial leaf spot, Downy mildew, Gray mold, Southern leaf blight	78 fl. oz.	Repeat application every 7-10 days if needed.

Crop	Diseases Controlled	Maximum Annual Rate (fl. oz. product/1000 sq. ft.)	Application Notes
Corn (cont.)	Cercospora leaf blight, Common or Southern Rust, Gray Leaf Spot, Stewart's Wilt*, Bacterial Stalk Rot*	78 fl. oz.	Repeat application every 7-10 days if needed.
Crucifer Crops (Bok Choy, Broccoli, Brussels sprouts, Canola, Cauliflower, Cabbage, Kale, Kohlrabi, Mustard, Pak-Choi, Rape, Rutabaga, Turnip)	Alternaria blight, Bacterial leaf spot, Downy mildew, Powdery mildew, White mold (Sclerotinia) Black rot	49 fl. oz.	Repeat application every 7-10 days if needed.

Crop	Diseases Controlled	Maximum Annual Rate (fl. oz. product/1000 sq. ft.)	Application Notes
Cucurbits (Cucumbers, Honeydew, Muskmelon, Watermelon, Cantaloupe, Melons, Squash, Pumpkin, Zucchini)	Alternaria blight, Angular leaf spot, Anthracnose leaf and fruit spot, Downy mildew, Gray mold, Scab, Ulocladium leaf spot, Powdery mildew, Watermelon bacterial fruit blotch, Fruit blotch (suppression)	97 fl. oz.	For cucumbers grown in a greenhouse, apply every 5 days in the first 2 weeks after emergence, then reapply every 7 days.
Currant and Gooseberry	Anthracnose leaf and fruit spot, Phyllosticta, Septoria leaf spots, Powdery mildew	298 fl. oz.	Repeat application every 7-10 days if needed.
Ginseng	Alternaria blight, Botrytis blight, Phytophthora, Powdery mildew	97 fl. oz.	Repeat application every 7-10 days if needed.

Crop	Diseases Controlled	Maximum Annual Rate (fl. oz. product/1000 sq. ft.)	Application Notes
Herbs (basil, chives, coriander, dill, lavender, mint, parsley, rosemary)	Anthracnose, Alternaria blight, Bacterial Blight, Botrytis, Downy mildew, Leaf scorch, Leaf spot, Rhizoctonia Leaf blight	Dill: 73 fl. oz. Parsley: 37 fl. oz. Other listed Herbs: 49 fl. oz.	Repeat applications every 10-14 days if needed.
Grapes	Downy mildew, Black rot, Phomopsis Cane and Leaf Spot, Powdery mildew, Gray mold (Botrytis), ripe rot*	373 fl. oz.	Repeat application every 7-10 days if needed. Do not mix product with lime. Certain Vinifera and French Hybrid varieties may be sensitive to copper sprays resulting in marginal leaf burn. Before spraying these varieties, consult your State Experiment Station or make test sprays.

Crop	Diseases Controlled	Maximum Annual Rate (fl. oz. product/1000 sq. ft.)	Application Notes
Hop	Anthracnose leaf and fruit spot, Cercospora leaf spot, Downy mildew, Powdery mildew	49 fl. oz.	Repeat applications every 10 days if needed.
Lettuce, Chicory, Endive	Downy mildew, Septoria leaf spot, Powdery mildew, Bacterial soft rot and bottom rot	149 fl. oz.	Repeat application every 10 days if needed. Use lower rate when disease pressure is low or on copper sensitive varieties of lettuce.
Onion, Garlic, Leek, shallot	Botrytis leaf blight, Downy mildew, Neck rot, Bacterial soft rot, Purple blotch	112 fl. oz.	Repeat applications every 7-10 days if needed.

Crop	Diseases Controlled	Maximum Annual Rate (fl. oz. product/1000 sq. ft.)	Application Notes
Peanuts	Sclerotinia blight, Leaf spots (early and late), web blotch	88 fl. oz.	Repeat application every 7-10 days if needed.
Pome Fruits (Apples, Pears, Quince)	Anthracnose, Cedar Apple Rust, Scab, Sooty Blotch, Flyspeck, Quince Rust, Blossom Blast, European Canker, Collar Rot, Crown Rot	298 fl. oz.	Do not exceed one application between silver tip and green tip growth stages. May cause russetting of susceptible apple varieties. Do not exceed 1 gallon of product per 100 gallons of water. Repeat application every 7-10 days during bloom and growing season if needed.

Crop	Diseases Controlled	Maximum Annual Rate (fl. oz. product/1000 sq. ft.)	Application Notes
Blackberry, Blueberry, Raspberry	Gray mold (Botrytis), Mucor fruit rot, Rhizopus fruit rot, Anthracnose, Cane Spot, Leaf Spot, Pseudomonas Blight, Purple Blotch, Yellow Rust, Bacterial Canker	Blueberry: 156 fl. oz. Blackberry and Raspberry: 186 fl. oz.	Apply at the start of flowering and continue every 7-10 days until harvest.
Stone Fruit Trees (Almond, Apricot, Cherry, Nectarine, Peach, Plum)	Monolinia brown rot and blossom blight, leaf and fruit spot, Bacterial leaf spot, Bacterial Blast (<i>Pseudomonas</i>), black knot* (plum only)	335 fl. oz.	For brown rot blossom blight, apply full cover spray at delayed dormant (bud swell), popcorn, full bloom and petal fall stages. Repeat application every 7-10 days if needed

Crop	Diseases Controlled	Maximum Annual Rate (fl. oz. product/1000 sq. ft.)	Application Notes
Strawberry	Angular leaf spot, Leaf scorch, Mycosphaerella leaf spot, Phomopsis leaf blight, Powdery mildew, Septoria leaf spots	152 fl. oz.	Spray 1 month after planting (or before flowering on established plants). Repeat application every 7-10 days if needed.
	Anthracnose fruit rot, Gray mold (Botrytis)	152 fl. oz.	Apply at the start of flowering repeat application every 7-10 days until harvest.
Tobacco	Blue Mold (Downy Mildew)	149 fl. oz.	Repeat application every 10 days if needed.

Crop	Diseases Controlled	Maximum Annual Rate (fl. oz. product/1000 sq. ft.)	Application Notes
Tomato, Potato, Eggplant, Pepper	Anthracnose leaf and fruit spot, Bacterial speck, Bacterial spot, Cercospora leaf spot, Early blight, Gray mold, Late blight, Leaf mold, Septoria leaf spot	Tomato: 149 fl. oz. Potato: 466 fl. oz. Eggplant: 147 fl. oz. Pepper: 221 fl. oz.	Repeat application every 7-10 days if needed. Use the 2 fl. oz. per gallon of water dilution rate for late blight.
Walnut	Blight	596 fl. oz.	Repeat application every 7-10 days if needed.
Avocado	Anthracnose, blotch, Scab	353 fl. oz.	Apply when blossom buds open. Repeat application every 14-30 days if needed.

***Not registered for use in California**

STORAGE AND DISPOSAL

Pesticide Storage: Store in a secure place, away from open fire or flame. Keep container closed and reseal after use. Product may be damaged by freezing. Do not store product below 4°C. If spilled, use absorbent materials and dispose of in an approved manner.

Pesticide Disposal and Container Handling: Nonrefillable container. Do not reuse or refill this container. **If empty:** Place in trash or offer for recycling if available. **If partly filled:** Call your local solid waste agency for disposal instructions. Never place unused product down any indoor or outdoor drain.

FIRST AID

IF IN EYES

- Hold eye open and rinse slowly and gently with water for 15-20 minutes.
- Remove contact lenses, if present, after the first 5 minutes, then continue rinsing eye.
- Call a poison control center or doctor for treatment advice.

IF ON SKIN OR CLOTHING

- Take off contaminated clothing.
- Rinse skin immediately with plenty of water for 15-20 minutes.
- Call a poison control center or doctor for treatment advice.

IF SWALLOWED

- Call a poison control center or doctor immediately for treatment advice.
- Have person sip a glass of water if able to swallow.
- Do not induce vomiting unless told to by a poison control center or doctor.
- Do not give anything to an unconscious person

Have the product container or label with you when calling a poison control center or doctor or going for treatment.

PRECAUTIONARY STATEMENTS

Hazards to Humans and Domestic Animals

CAUTION: Harmful if swallowed or absorbed through skin. Avoid contact with skin, eyes or clothing. Wash hands thoroughly with soap and water after handling and before eating, drinking, chewing gum, using tobacco or using the toilet. Remove and wash contaminated clothing before reuse.

Environmental Hazards

This pesticide is toxic to fish and aquatic invertebrates and may contaminate water through runoff. This product has a potential for runoff for several months or more after application. Poorly draining soils and soils with shallow water tables are more prone to produce runoff that contains this product. Drift and runoff may be hazardous to aquatic organisms in water adjacent to treated areas.

Do not apply directly to water, to areas where surface water is present, or to intertidal areas below the mean high water mark. Do not contaminate water when disposing of equipment washwater or rinsate.

NOTICE TO BUYER - Seller warrants that this product conforms to the chemical description on this label and is reasonably fit for purposes stated on this label only when used in accordance with directions under normal use conditions. This warranty does not extend to use of this product contrary to label directions, or under abnormal use conditions, or under conditions not reasonably foreseeable to seller. To the extent consistent with applicable law, buyer assumes all risk of any such use. Seller makes no other warranties, either expressed or implied.