

# THE Tree-Guy™

The Tree Installers Choice

Patent Pending

## TREE-GUY INSTALLATION INSTRUCTIONS

### SYSTEM TG-4B-G

The only tools you will need to drive The *Arrow*™ Anchor into the soil:

- (a) A 3 to 4 ft. length of Std. 1/2" IPS steel pipe (available at any hardware store).
- (b) A small or medium size sledge hammer.

1. After planting the tree, lay out the three (3) Tree-Guy™ assemblies equal distance around the tree with The *Arrow*™ Anchor away from the tree trunk and with the Tree-Tie™ tether laid toward the tree.

The entry point of The *Arrow*™ Anchor should be 4 to 4-1/2 ft. from the tree trunk.

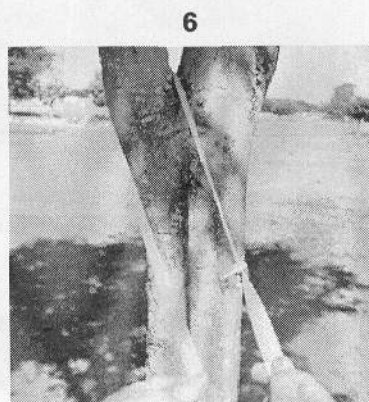
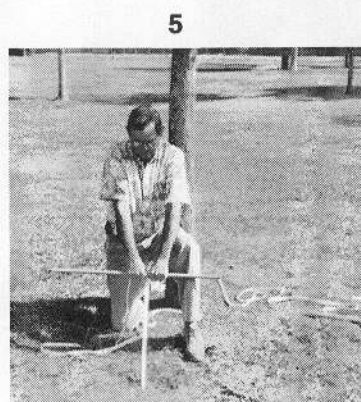
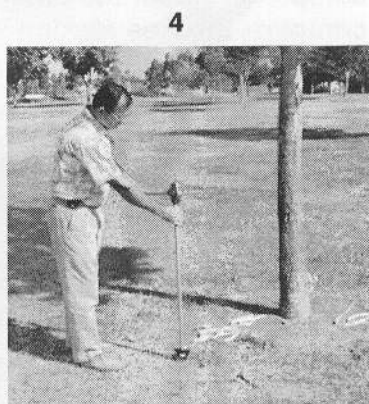
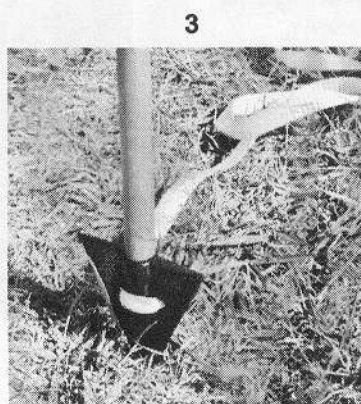
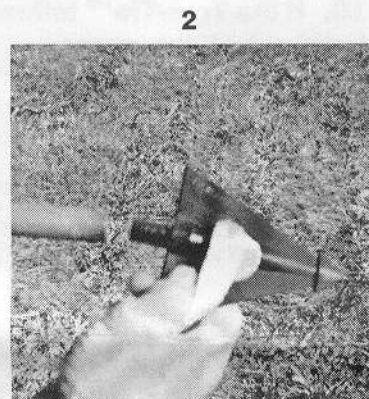
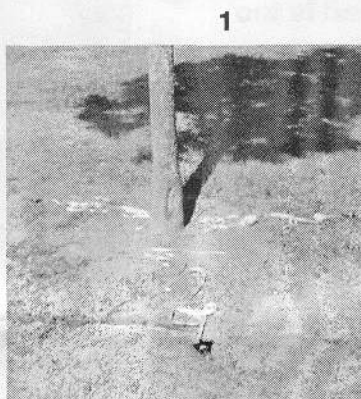
2. Place the drive pipe over the round shank of The *Arrow*™ Anchor.

3. Point The *Arrow*™ Anchor either straight up-and-down or at an angle, facing away from the tree, up to 15 degrees.

4. Drive The *Arrow*™ Anchor to a depth of approximately 18" to 24" into the soil.

5. To set The *Arrow*™ Anchor wrap the Tree-Tie™ tether around the drive bar (2-3 wraps) and then, with your back to the tree, give a sharp tug on the tether and bar towards the tree (not straight up). The *Arrow*™ Anchor should then be "set" with 2 or 3 tugs.

6. Put the Tree-Tie™ tether through a fork in the tree to keep it in place for guying the tree.



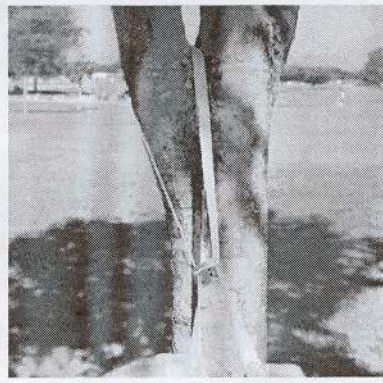
See Illustrations on other side.



7. Thread the Tree-Tie™ tether through the rear camlock buckle slot.

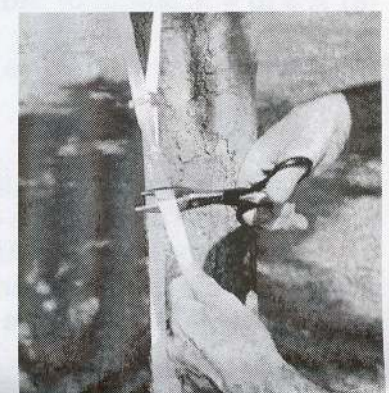


8. Tie an overhand knot near the camlock buckle slot.



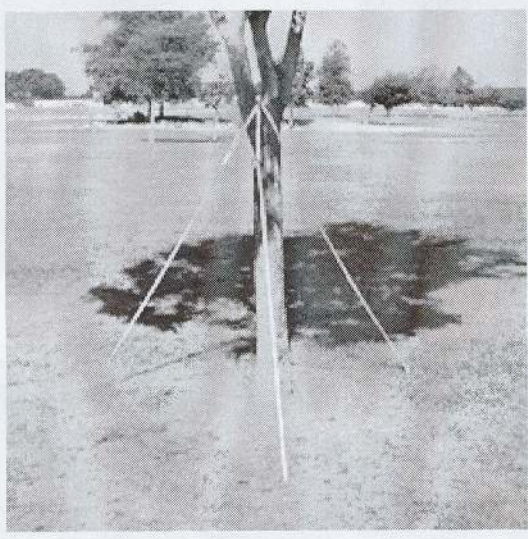
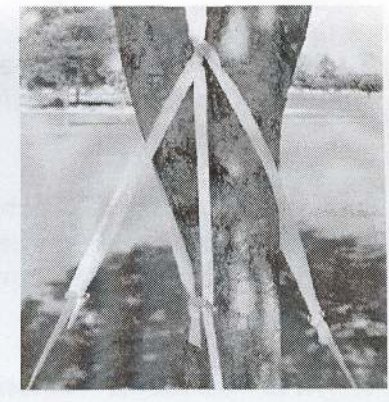
9. Pull the overhand knot tight.

10. If the Tree-Tie™ tether end is too long, cut off the excess.



11. Push in on the camlock buckle lever and take-up the slack in the Tree-Tie™ tether to the desired tension.

12. This leg of the Tree-Guy™ system is complete. Install the other two legs to complete the tree staking system.



**(800) 624-1116**

**(FAX) – 714-545-3311**

**Internet: [www.usrigging.com](http://www.usrigging.com)**



**4001 W. Carriage Dr., Santa Ana, CA 92704**