

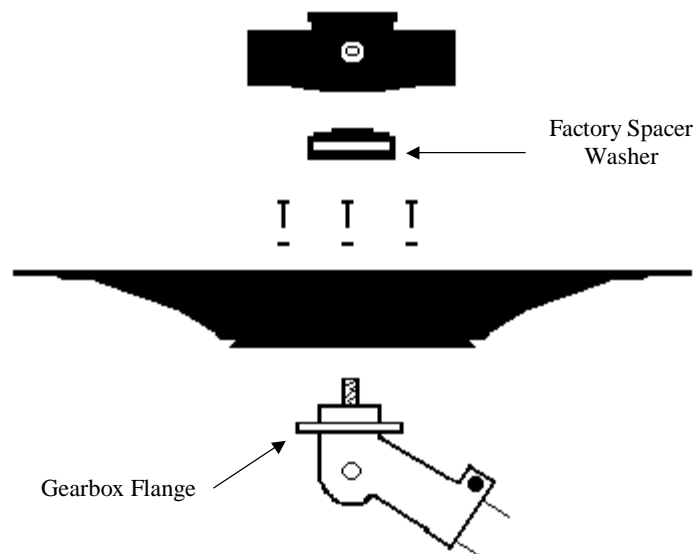
Instruction Sheet – Installation of the EDGIT

Warning! Trimmers produce flying debris!
Always wear eye protection while operating a trimmer!

[*NOTE– ECHO - High Torque Model-You may have to enlarge the center hole slightly to fit.]

Edgit Installation:

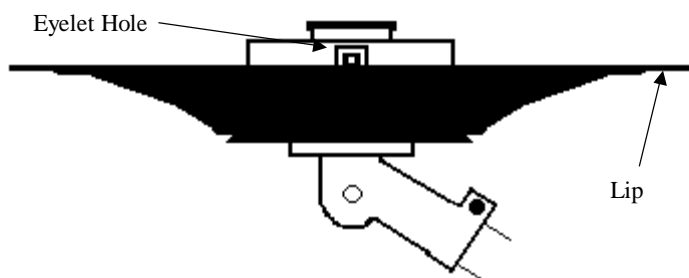
- 1) Remove bump head, factory spacer washer and the guard. Remove head by locking gearbox, rotate head clockwise. It is left hand thread.
- 2) Place EDGIT over gearbox flange and align appropriate holes.
- 3) Install enclosed screws with lock washers.
- 4) Replace factory spacer washer.
- 5) Replace bump feed head. If a washer is included in your kit it may need to be placed under string head. (See string placement below)
- 6) Tighten bump feed head by locking arbor. (Gearbox locking hole is still available between the head and Edgit.)



***Some High Torque Echos:** may require a washer under the bump head (see below).

String Placement:

The EDGIT is designed so its outer lip is placed adjacent to the plane of the spinning string using the standard factory bump head. However, it's possible the trimmer manufacture or you may have installed a different head. Check for correct placement by looking across the plane formed by the opposite sides of the lip. The eyelet hole should be completely visible above the aligned lips as shown.



If the eyelet hole is down inside the disk slightly, placement of a metal washer under string head will move the string away from the outer lip of the disk.

If the eyelet hole is more than an 1/8" beyond the lip your trimmer may cut a wider edge than desired. Washers placed between the gearbox and the EDGIT may be required to place the EDGIT's lip adjacent to the spinning string plane.

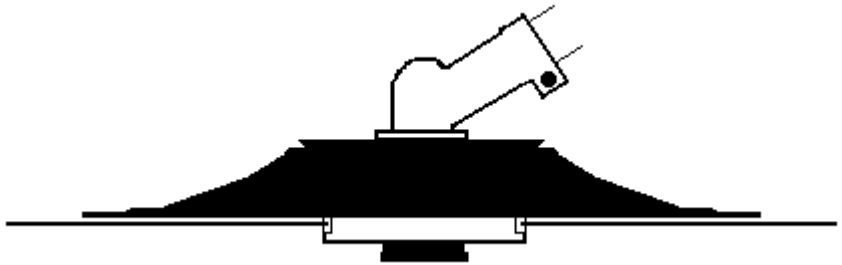
Good luck, if you have any questions call 859-384-3276.

EDGIT Maintenance:

Several inches of string should extend beyond the EDGIT's outer lip while operating the trimmer.

Enclosed is a tube of DRY GRAPHITE. This is the only lubricant that should be used for the EDGIT's bearing.

Frequency of lubrication is determined by how much edging is performed in relationship to trimming.



The bearing plates have a plastic plug covering a bearing access hole. But the easiest way to add graphite is hold the trimmer vertical. Slip a screwdriver or (carefully) knife blade along the slanted surface of the O-ring groove on the top plate, then pull a small section of O-ring out of the groove. Squirt graphite into the groove, rotate the disk to let the graphite fall in, repeat. Replace the O-ring

Clean bearing: If you have sandy soils you may need to occasionally remove the O-rings and blow out the bearing with air pressure while rotating the disk, then replace the O-rings and refill with graphite. (Remove the O-rings by slipping a thin flat screwdriver blade between the O-ring and plastic plate by rotating the blade back and forth until it slips behind the O-ring. Then pry the O-ring out of the groove.)

*Note for Golf Courses:

Edging of sand traps requires frequent lubrication and cleaning of the bearing to ensure the disk continues to turn. Sand traps often don't offer enough traction to make the disk roll, however if it is to be used for edging cart paths, curbs, walks and beds the disk must continue to roll.

Using the EDGIT:

Operating most commercial straight shaft trimmers is best accomplished holding the trimmer LEFT HANDED. Refer to our FOLLOWING THE EDGIT manicuring and training system.

Experienced operators may resist using the EDGIT just because it's something new. It may take several days of operating the EDGIT before it's advantages become obvious to them. Be patient.

The EDGIT is **not** designed to rotate freely. This would allow it to spin with the string. However, it should roll when placed on the ground without having to push downward.

Warnings:

**Do not lay anything heavy on the trimmer, especially while lying in the sun. The EDGIT's outer lip may be permanently deformed.

**Be careful not to lay the trimmer in the bed of a truck facing forward, especially flat bed trucks. The EDGIT can act as a sail and lift the trimmer out of the bed. Tie your trimmers down!

***The EDGIT is not warranted in cases of operator abuse.

******ALL OPERATORS SHOULD ALWAYS WEAR EYE PROTECTION WHILE OPERATING A TRIMMER. ALSO BEWARE OF THE FLYING DEBRIS PRODUCED BY A TRIMMER WHEN OPERATING AROUND OTHER PEOPLE OR GLASS TO PREVENT INJURY OR PROPERTY DAMAGE.**