

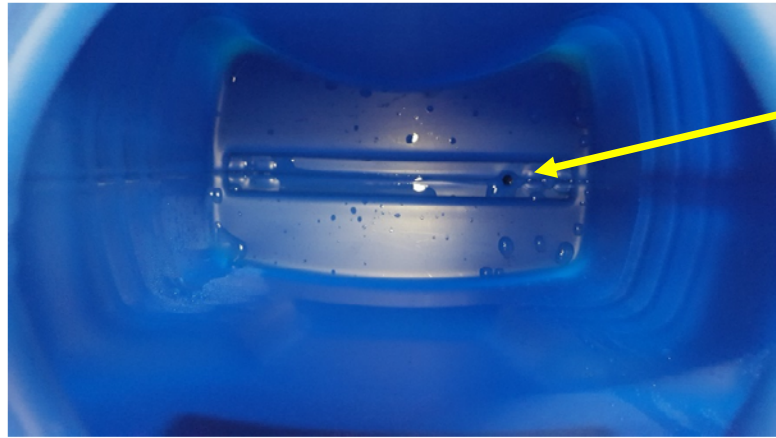
TSB 103117

TECHNICAL NOTICE

There have been some reports from the field that some new PJB and PJBc sprayers will not pump fluid right out of the box. You can hear the pump running but nothing comes out of the nozzle. We have found the problem is the pumps are shipped dry and ambient heat in the warehouse can cause the check valves on the pump to stick against the seat causing the pump from pumping water.

To correct this, perform the following:

1. Lock the trigger valve in the on position by pushing the trigger valve lever and sliding the red button forward to lock it on.
2. Remove the tank lid and fill strainer so you can see inside the tank. There is a small hole in the bottom of the tank where the water goes to the pump. See picture below showing inside the tank.
3. If there is water in the tank empty it.



Water Outlet Port

4. Turn the pump on.
5. Using a garden hose with spray nozzle, aim the high-pressure stream of water right at the water outlet port (small hole in the bottom of the tank).
6. You should hear the pump begin to pump water and then it should spray out of the nozzle. This may take up to 30 seconds.
7. Let the pump sprayer for 10 seconds and then release the trigger valve.
8. The sprayer is now ready for use.

Once the pump is primed from the first time this procedure will not have to be performed again.

If you have any questions please feel free to contact Jacto Technical Assistance at 1-800-522-8610.

For more information, please contact Jacto Expert Technical Assistance:

www.jacto.com