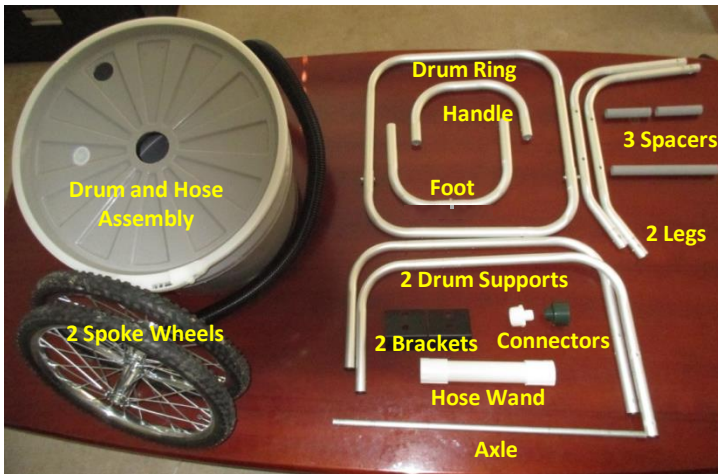


SMART WATER CART INSTRUCTIONS

Step 1: Open the boxes and locate the different components. Get the right tools.



Tools:

- Phillips head screw driver
- Socket or wrench set (7/16)

Step 2: Create the Drum Support Assembly:

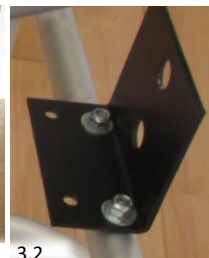
Attach the pre-assembled Drum Ring to the first Drum Support using the 2 1/2 " bolts and Nuts (2.1). Make sure that the Nuts are facing the outside the Drum Ring. Repeat for the second Drum Support. Make sure that the two Drum Supports are oriented the same way (the 2 longest vertical sections of the Drum Supports and the 2 shortest vertical sections of the Drum Supports attach to the same side of the Drum Ring (2.2).



Do not fully tighten the hardware.

Step 3: Install the Brackets to the Drum Support Assembly:

Attach the Brackets to the to the Drum Supports using the 1 1/2 Bolts, Nuts and Washers (3.1). The Nuts and Washers go under the bracket. Make sure to install the bracket to the Drum support using the holes that are the farthest from the bracket edge leaving two exposed holes inside the cart frame (3.2).



Step 4: Attach the Handle to the Legs:

The Handle is the smallest U shape aluminum piece and is the one without any component attached to it. Secure the Handle to the two Legs by using the 1 1/2" Bolts and Nuts (4.1). Make sure that the Nuts are installed facing inside the Handle.

Do not fully tighten the hardware.

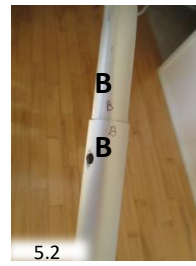


Help is available. Please email support@smartcarts.com call (207) 591-4250

SMART WATER CART INSTRUCTIONS

Step 5: Attach the Foot to the Legs to Create the Leg Assembly:

The Foot is the U shape aluminum that has a bolt attached to it. Slide the Foot over the Legs by **making sure to properly orient the components by matching together the markings on the foot and legs (i.e. A slides over A and B slides over B)** (5.1, 5.2). Secure the Foot to the two Legs by using the 1 ½" Bolts and Nuts. Make sure that the Nuts are installed facing inside the Foot (5.3). **Do not fully tighten the hardware.**



Step 6 : Connect the Drum Support Assembly to the Leg Assembly:

Using the 2 1/2" bolts and nuts secure the Drum Support Assembly to the Leg Assembly. Make sure that the Foot and the Brackets are mounted on the same side of the frame as pictured (6.1, 6.2). Make sure that the Nuts are installed facing inside the cart frame.



Step 7 : Tighten All the Hardware.

Step 8 : Install The Wheels and Wheel Spacers:

Start by removing the vinyl caps, then slide the axle through the appropriate hole for your Water Cart. **IT IS VERY IMPORTANT THAT YOU INSTALL YOUR AXLE USING THE RIGHT HOLE. THE HOLE TO USE IS LOCATED THE FARTHEST AWAY FROM THE ALUMINUM FRAME PIC 8.1.** After you went through the first bracket hole slide the long spacer into the axle and then go through the second bracket hole (8.2). Slide the first short plastic spacers on the axle then slide the washers. **It is important that the washers are installed between the wheels and the plastic spacers (8.3).** Slide the first wheels on the axle, insert the cotter pins. The cotter pins need to be opened and bent in order to stay secured (8.4). Repeat for the second wheel. Re-install the vinyl caps.



Step 9 : Install The Drum and Hose Assembly:

The Drum and Hose Assembly simply sits on the cart frame. Make sure that the hose is facing the cart handle as pictured.



Step 10 : Attach The Hose Wand and Connectors:

Depending on your needs, choose the right connector and simply hand screw it in place.



Warning:

Make sure that you get used to how the water weight transfers to the handle and wheels before fully filling your Water Cart. Start by filling the Water Cart with less water until you get used to how the water weight balances on the cart. Make sure to always respect your physical limitations and do not fill the cart over your capacity.

Gravity Based Water Flow System:

To start the water flow simply lower the hose below the water level in the tank. To stop the flow simply raise the hose higher than the water level in the tank.