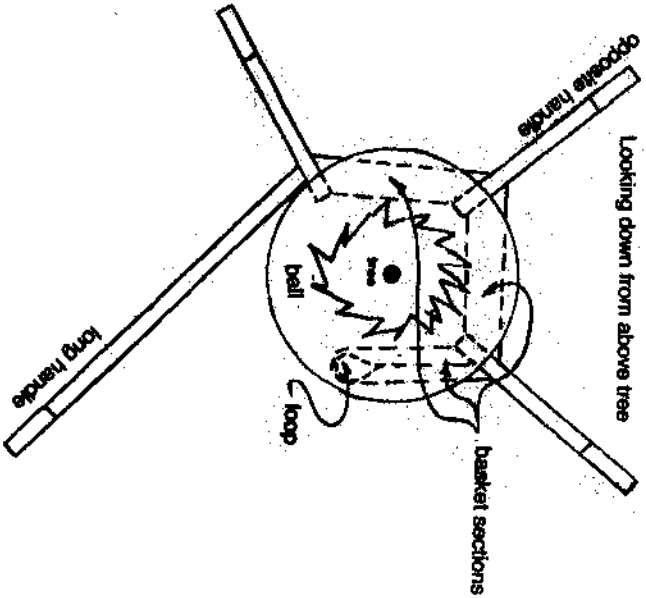
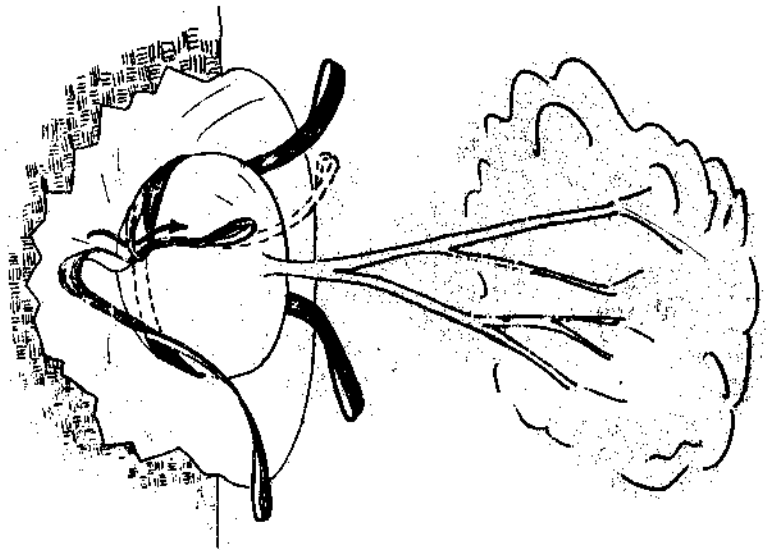


We appreciate your interest in our product TREETOTE™ plant lifting sling. This tool has become invaluable in our operation (retail nursery and landscape contractor) and we are sure TREETOTE™ can quickly pay for itself in your business.

Nurserymen - TREETOTE'S™ main use is in lifting heavy plant balls from the plant pit. The sling is easily wrapped around the ball providing four handles to lift a heavy, bulky load from below ground level. It is also a great help in loading heavy B & B material onto trucks.

Landscape Contractors - TREETOTE™ is an indispensable tool when transplanting at the job site. This sling provides a convenient method of handling expensive plant materials minimizing damage to plant balls and reducing the hazards of back injuries to your employees.

Garden Centers - TREETOTE™ comes in mighty handy for neat, well groomed sales employees moving large, dirty, B & B stock. Two women can easily move surprisingly heavy loads. Use TREETOTE™ as a leaner for customers with big eyes and small biceps to help them properly handle and plant their purchases.



INSTRUCTIONS

1. Slip TREETOTE™ around ball as shown in the diagram.
2. Locate basket sections as far under ball as possible.
3. Thread long handle through the loop and cinch tight.
4. Lift plant with two or four people.
5. Lift large plant materials by inserting one 2x4 through two handles and one 2x4 through the remaining two handles. Four men can lift 30" + ball size using this technique.
6. To remove TREETOTE™ from the ball, slip the long handle out of the loop. Pull the handle opposite the loop, sliding the sling out from under the plant. Unwinding TREETOTE™ from around the plant sometimes buckles the wide webbing of the basket sections making removal more difficult. Proper use of TREETOTE™ makes the hard task of moving heavy trees and shrubs easier.



SAFETY - Reduces back injuries and hernias — Put handles on bulky loads.

Call or write for more information:

TREETOTE TM
252-633-6119

Better than chain slings—lighter, stronger, **SELF-ADJUSTING** less ball damage. **QUALITY** nylon web construction. Comfortable hand grips. An absolute **MUST** for all professional plant movers.



CONVENIENCE — Choker design goes off and on with ease - No buckles or hooks.

309 Renny's Creek Dr.
New Bern, NC 28560



VERSATILITY - 4 sizes to fit
14 in - 26 in Root Balls.
20 in - 36 in
40 in - 54 in
54 in - 66 in